



HTGF-160 Automatic Aluminum Tube Filling Sealing Machine

- Widely used for ointment, cream, gel viscosity fluids agents, etc.

Overviews

HTGF-160 Filling and Sealing Machine is our company in reference to foreign advanced tube filling and sealing machine models and combined with the actual situation of the domestic and foreign tubes, independent development and redesign a new filling and sealing machine. Apply for a variety of aluminum tube filling and sealing, the maximum operating speed is 150 tubes/ min, the smoothly speed is 110-120 tubes/min (depend on the size of your tube and filling volume). Frequency control, touch screen operate, easy to operate. Filling accuracy is $\pm 1\%$.

Features:

1. Automatic feed the tubes into the tube holder through the infeed box, the tube is filled with stainless steel reciprocating piston pump after correction.
2. In order to make no leakage when filling, we use Japan imported seal rings.
3. We use air blowing for tail cutting after filling, also no tube no sealing.
4. Machine structure advanced, advanced configuration, with convenient operation, easy maintenance, easy cleaning and so on.
5. Can stand-alone use, but also connect with automatic cartoning machine, automatic shrink film machine be a packaging line.
6. The surface of table and the door under the stage of the machine are made of stainless steel 304, there are 38 pcs of tube holder on the synchronous pulley.

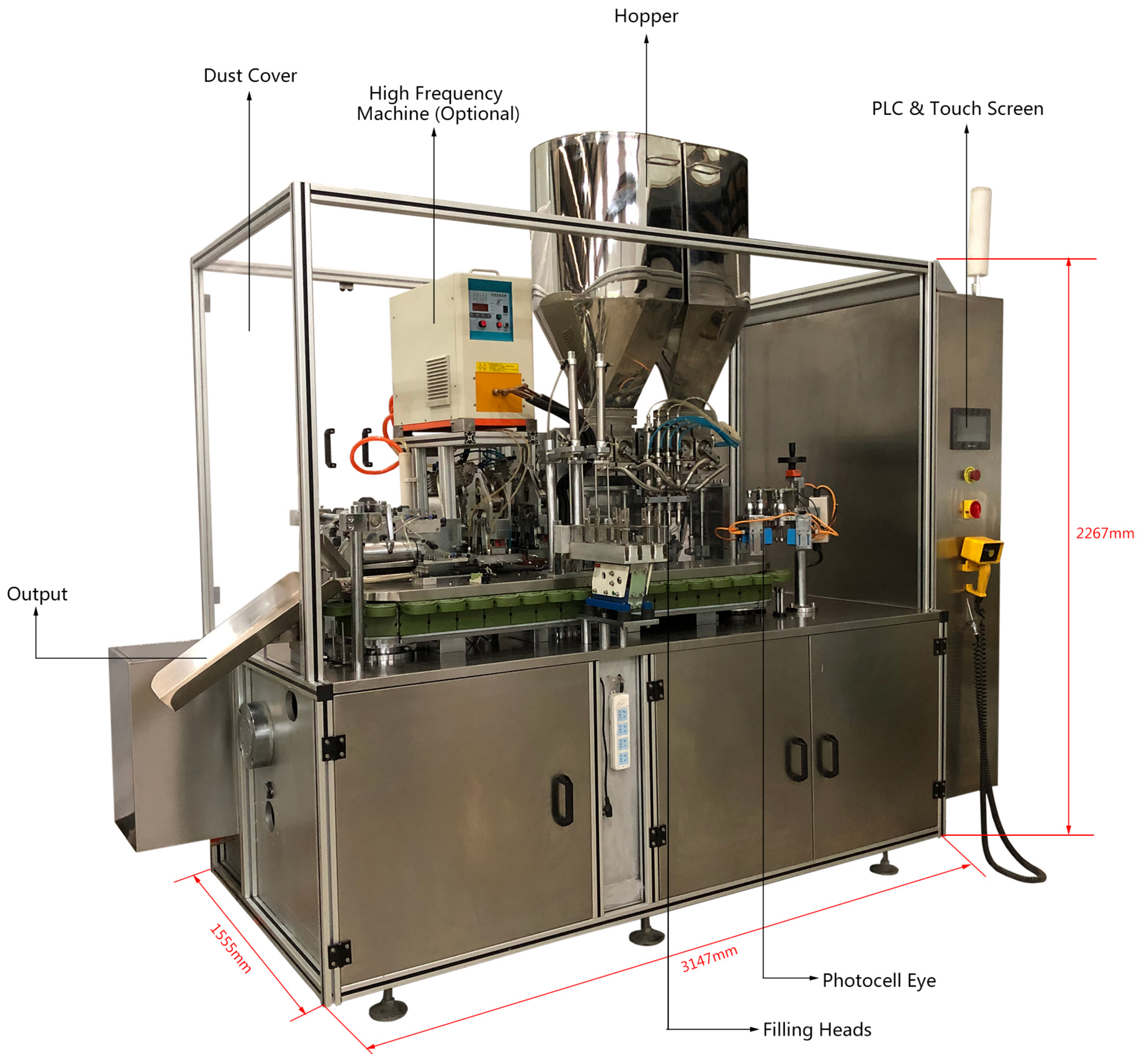
Work Procedure:

Tube Position (Hose Container) → Automatic Identification Label Located on Pipe → Filling Quantity Control Test [Hose Internal Cleansing (Option)] → Filling → Flat Tail 180°, Once Again Folded 180° → Folded 180° → Saddle-Shaped Fold → Tail Shaping → Print → Finished Discharge Code

Specifications

Model	HTGF-160
Productivity	110-120pcs/min
Tube Length	230mm (The Max.)
Tube Diameter	11-50mm (change different molds)
Filling Volume	2-200ml (change different molds)
Hopper Capacity	50L
Filling Accuracy	±1%
Control	PLC Control System
Display	Touch Screen Display
Power	1.7KW
Voltage	AC380V/220V, 50Hz/60Hz
Machine Dimension	3147*1555*2267mm (L*W*H)
Machine Weight	3800KGS

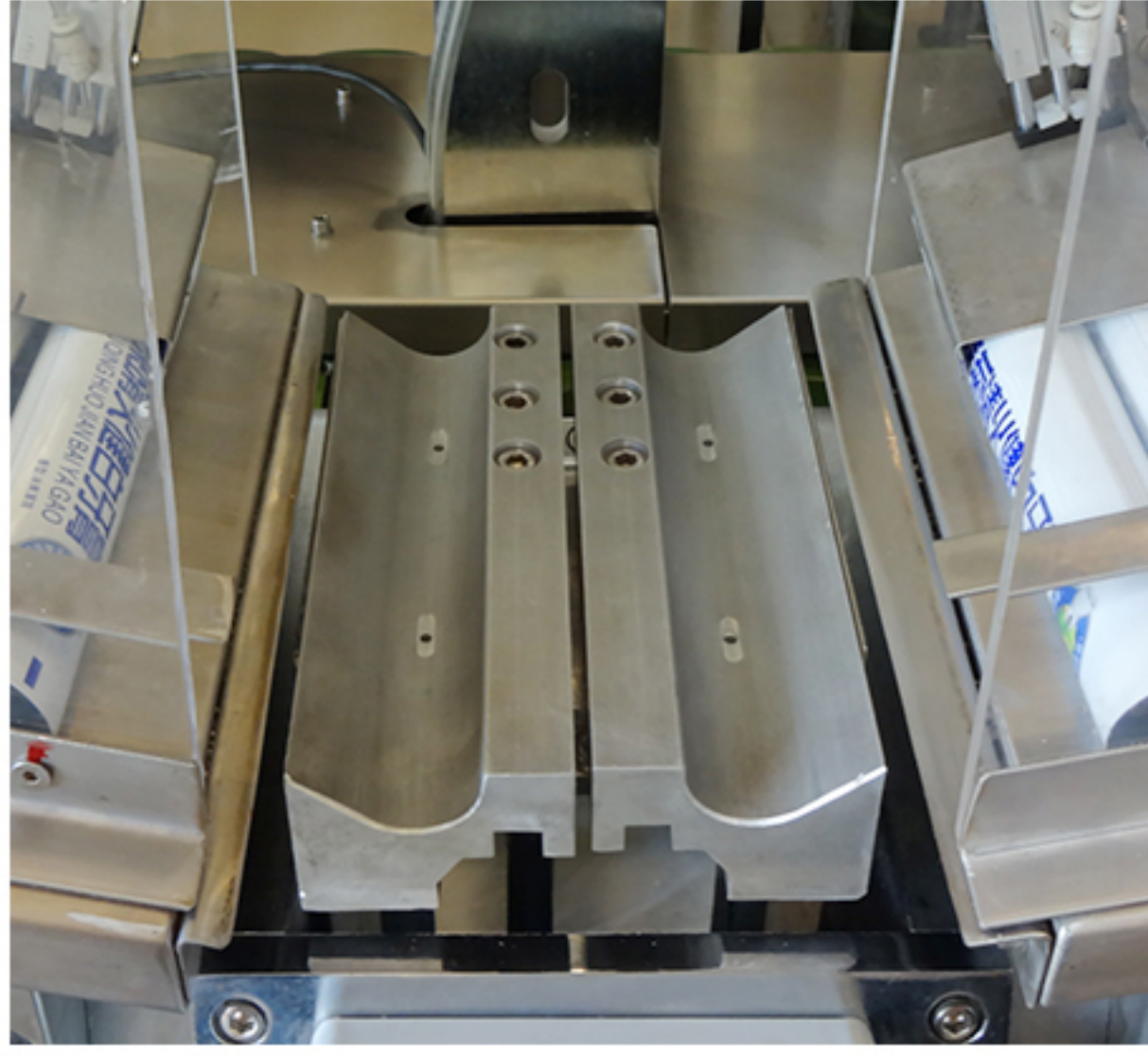
Structure



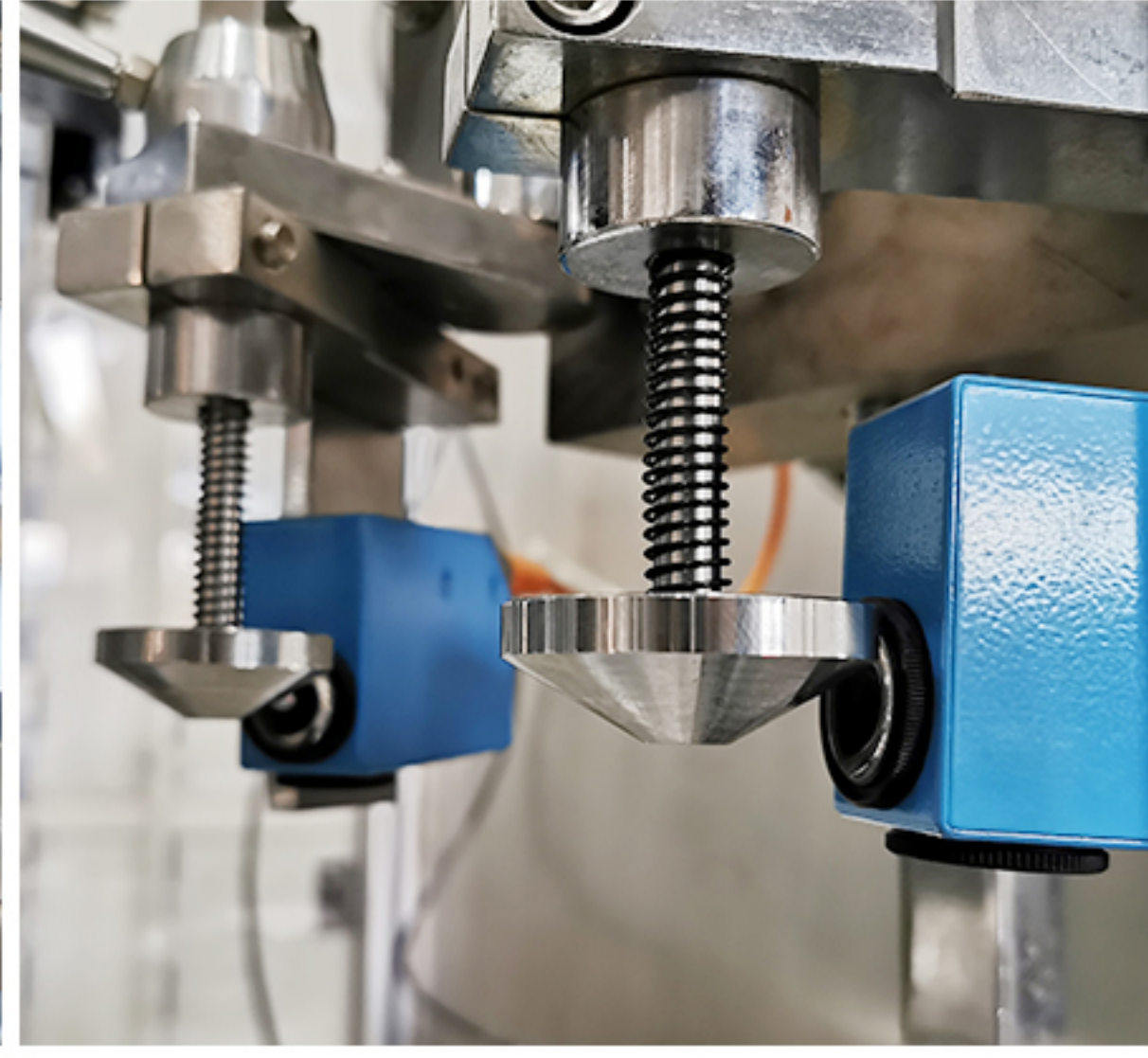
Detail Images



Tube Container



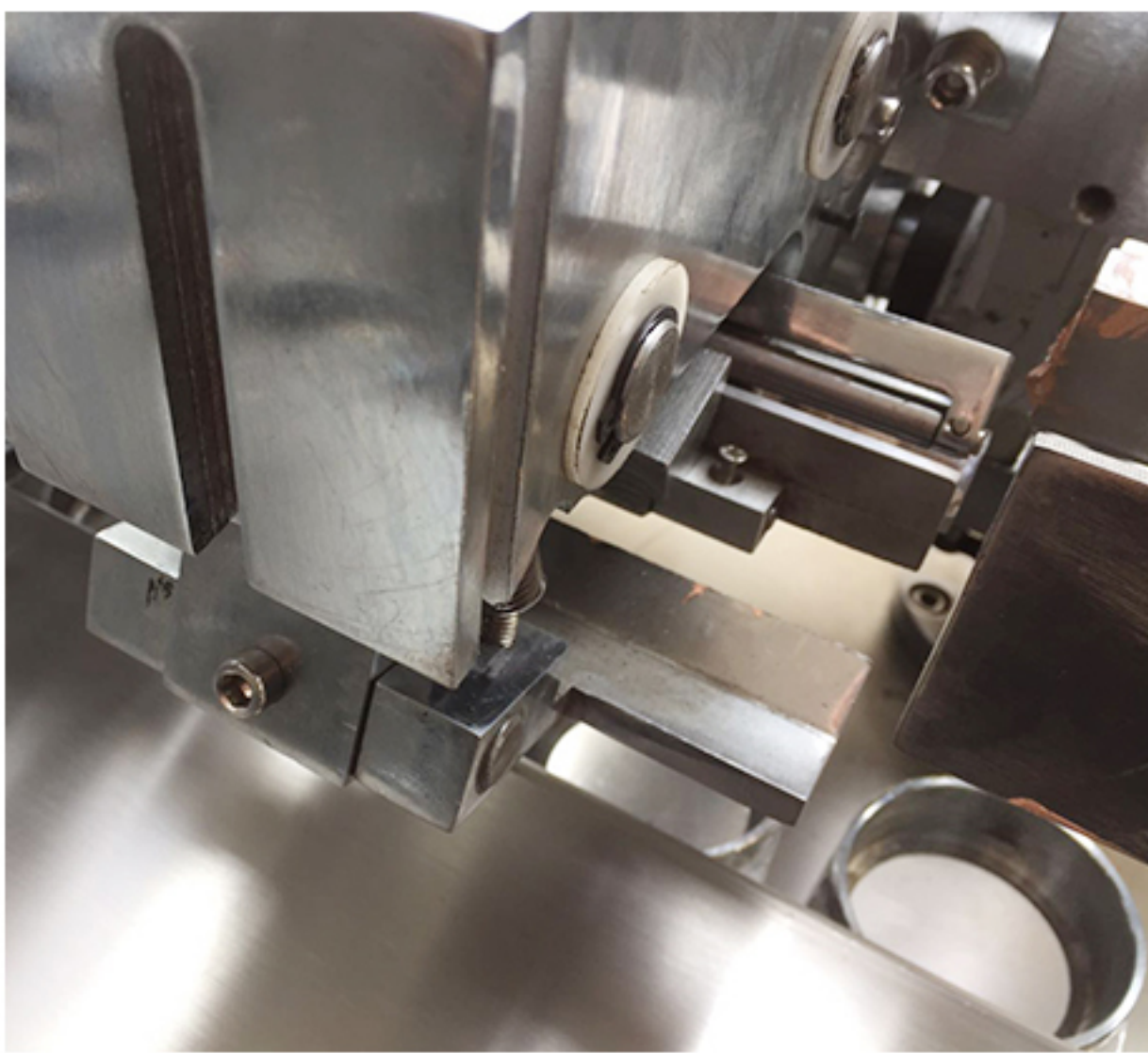
Tube Loading



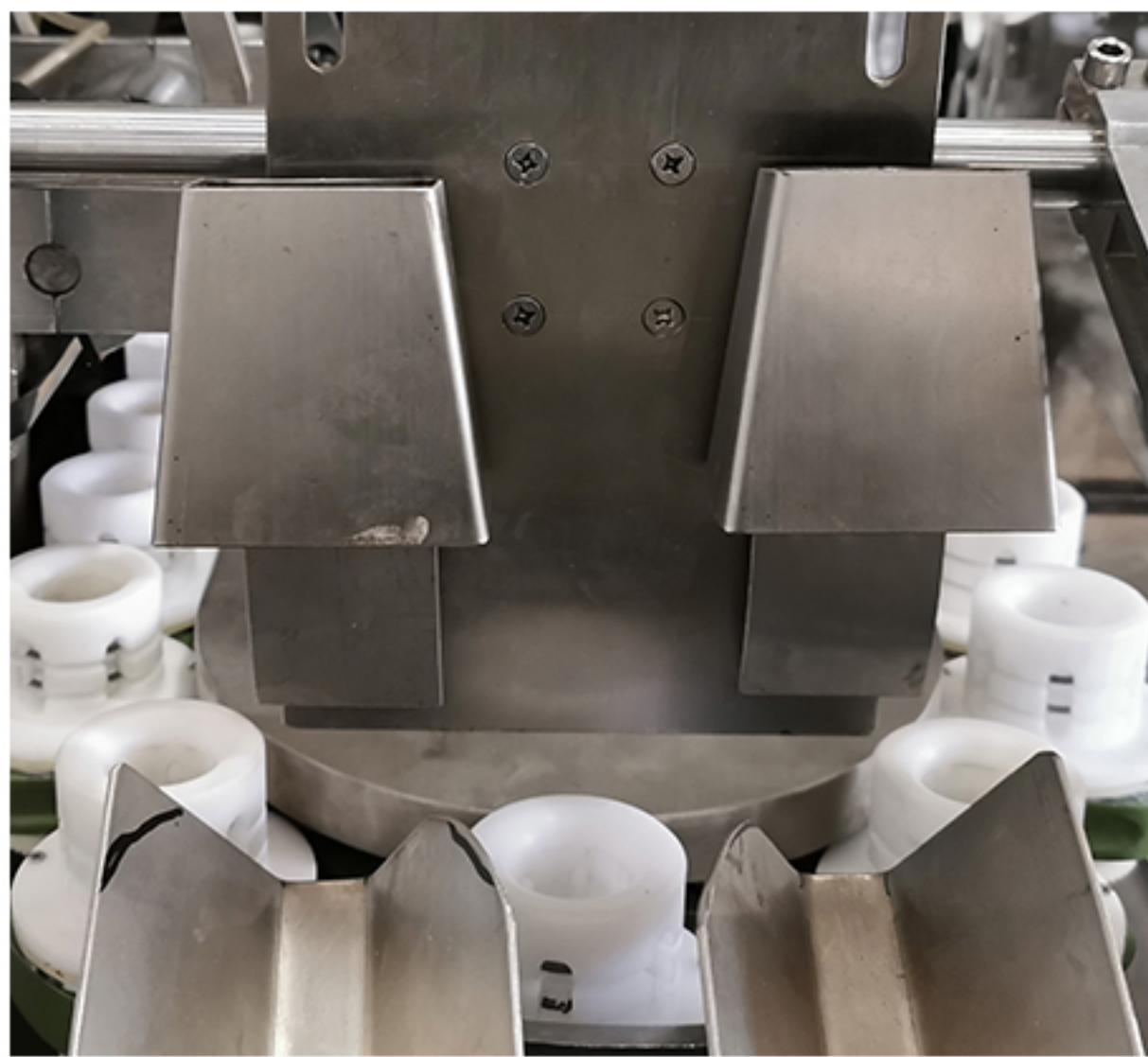
Photoelectric Sensor



Filling Heads



Folding Device



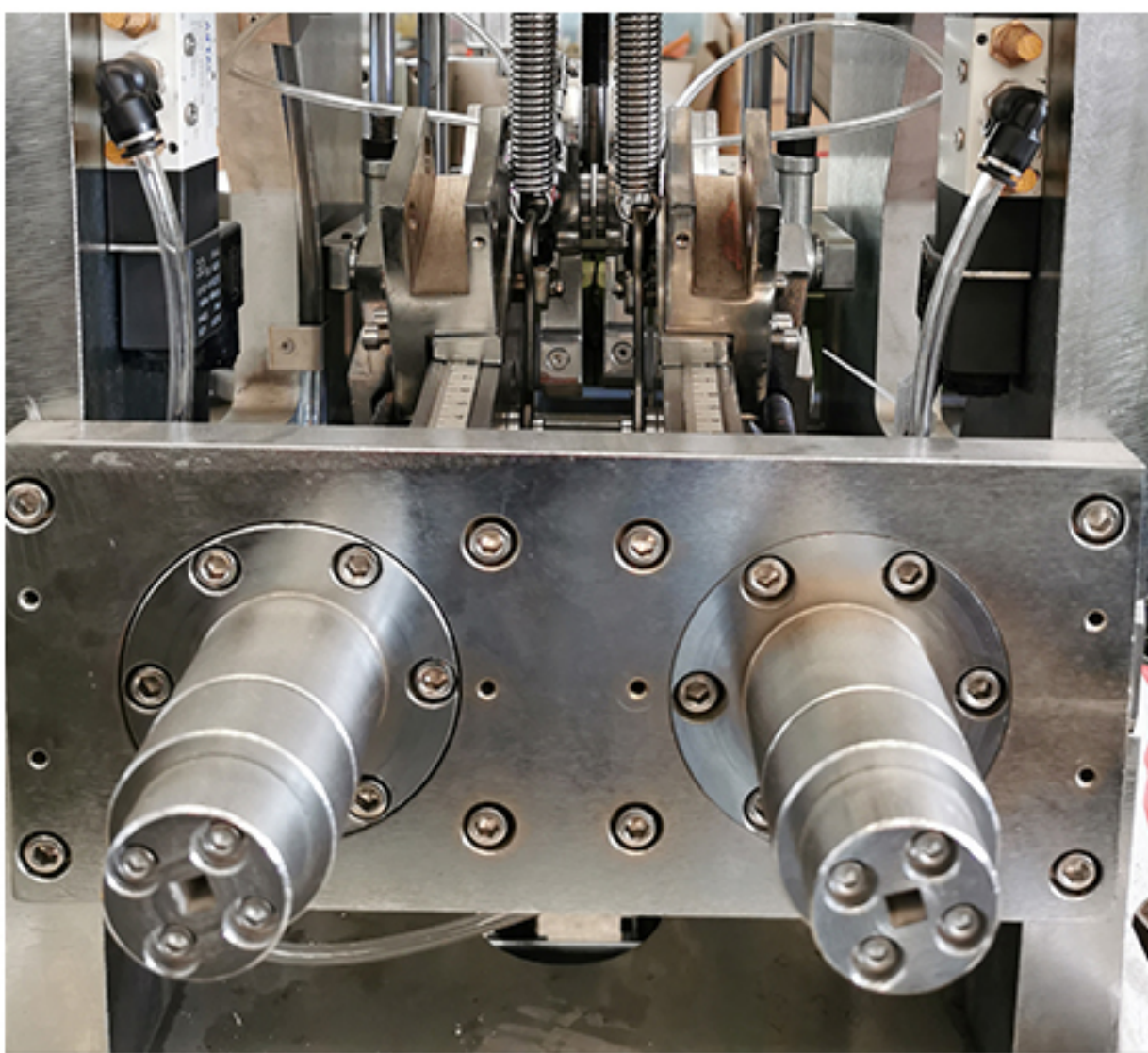
Output



Tube Height Adjustment Device



Working Plate



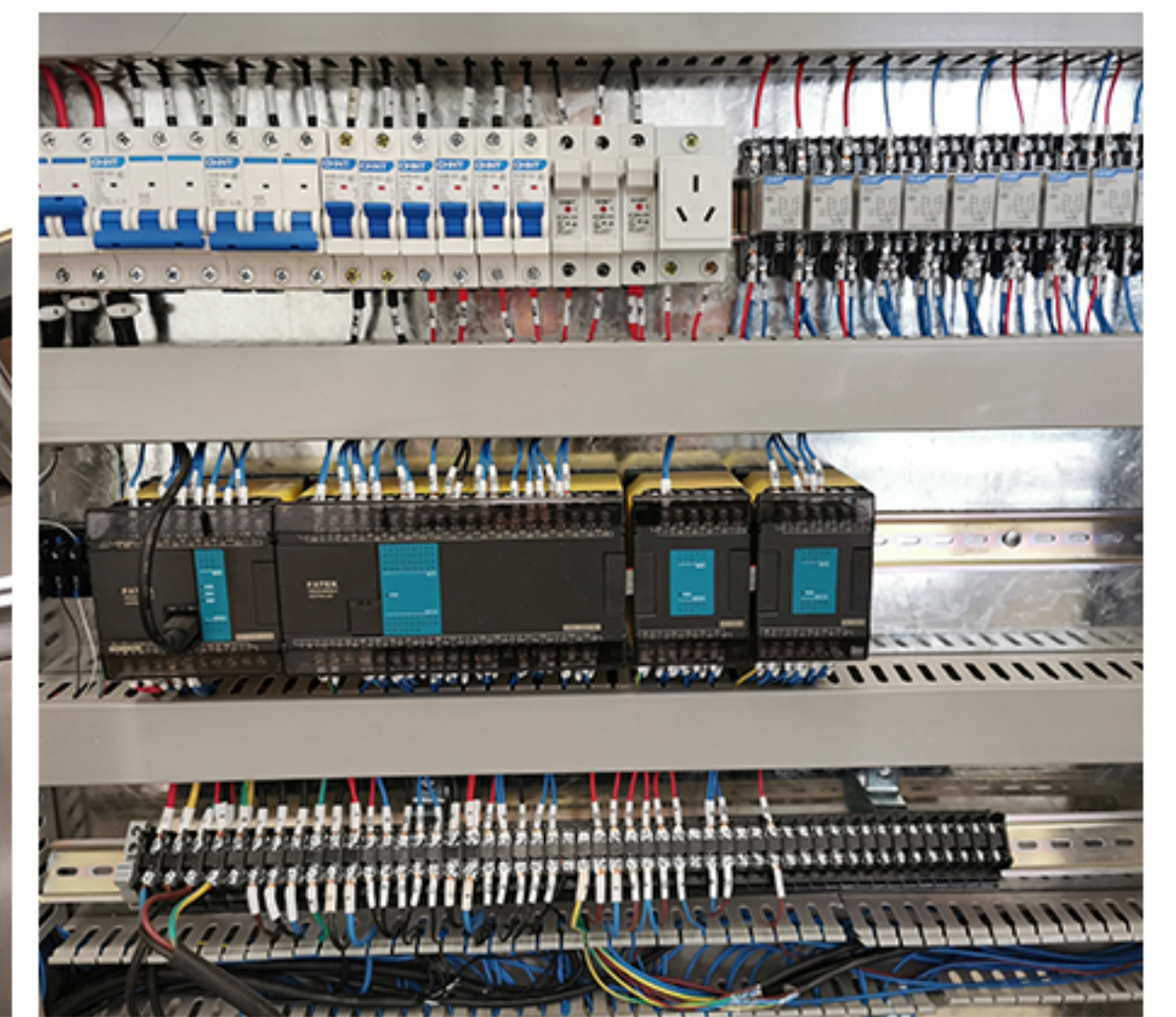
Filling Pump



PLC & Touch Screen



Hopper



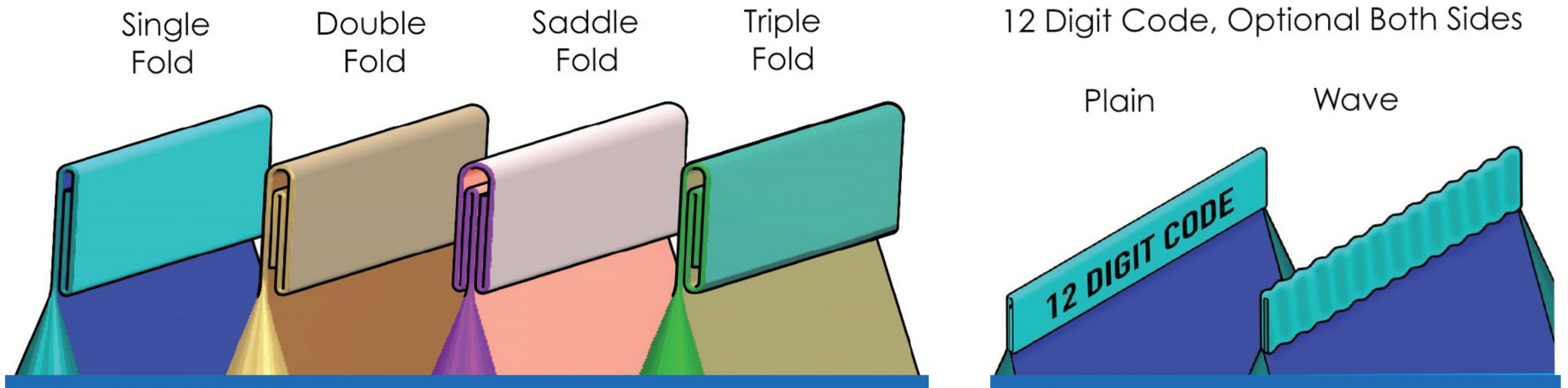
Electric Box

Samples

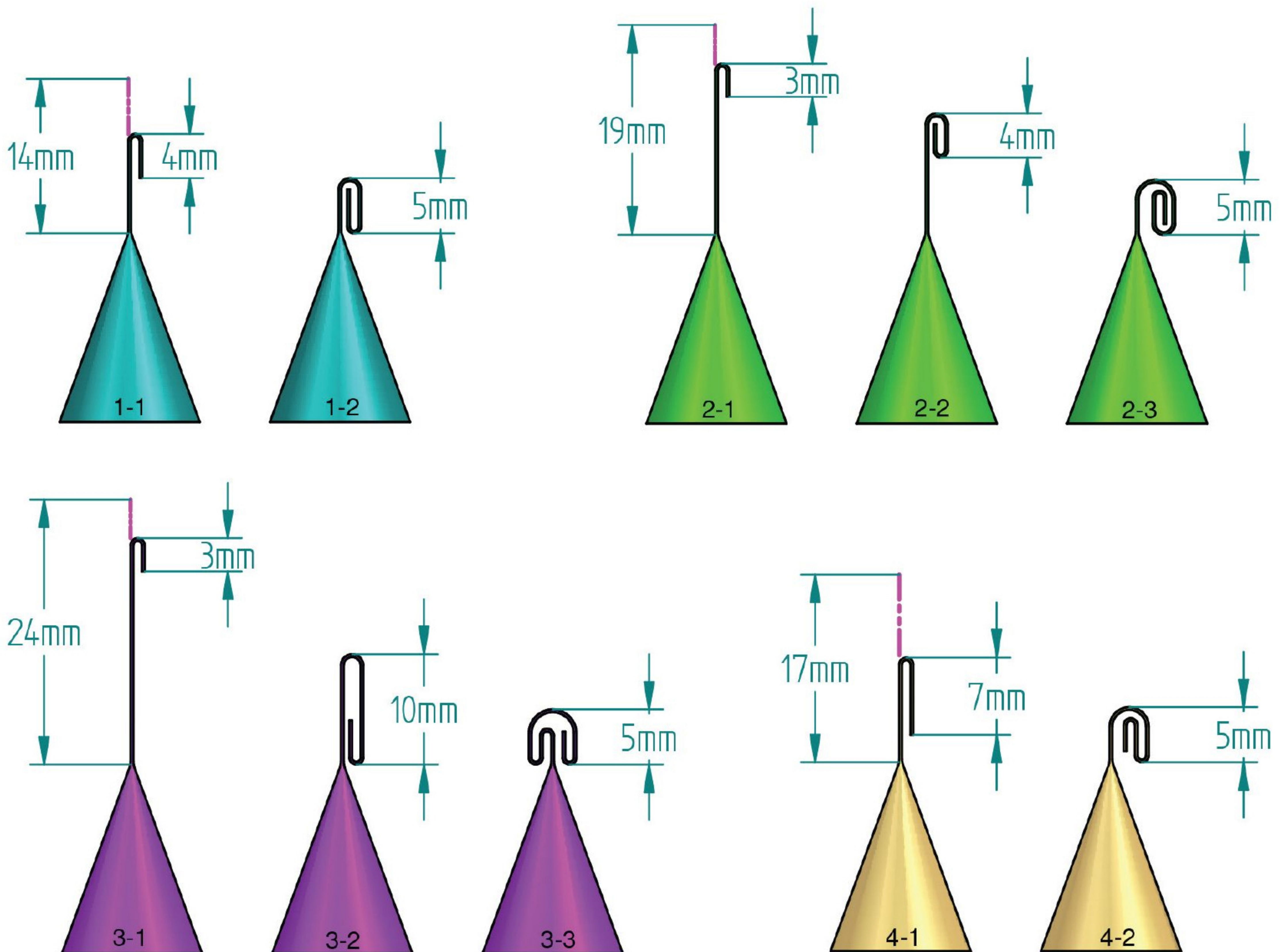


Sealing Types

Shanghai BiaoZan offers a variety of squeeze tube closing options for metal tubes. Metal tube closures are offered with Single Fold, Double Fold, Saddle Fold or Triple Fold with smooth or wave crimp options.



Metal tube sizes required for Single Fold, Double Fold, Saddle Fold and Triple Fold options.



Configuration List

NO.	ITEMS	BRANDS
1	Touch Screen	Taiwan WEINVIEW
2	Frequency Converter	China Wei Chuang
3	PLC	Japan Mitsubishi
4	Photocell Eye	Germany SICK
5	Temperature Controller	America Honeywell
6	Main Motor	Taiwan Taiqi
7	Optoelectronic Switch	American Banner
8	Cylinder	Shanghai
9	304 SS	Shanghai Baosteel

Advantages

1. Host with frequency control.
2. One machine, it can be achieved through different adjustable triple tail or 5-folds..
3. Robot folding both flexible and stable, filling and sealing tail design is an open and clean, maintenance is very convenient.
4. Color positioning, selection of German, while accompanied by a high-precision drives and stepper motor (very high requirements on the standard configuration Servomotor), to ensure the correct position graphics.
5. Note phased material filling nozzle deep inside the tube, while there is a bottom-up filling process is complete filling and sealing, no leakage or overflow. Machine is suitable for a variety of different physical and chemical properties of the filling material requirements. Filling volume fine hand wheel placed in the external body, tight regulation and very convenient to ensure filling accuracy $\leq \pm 1\%$, cost savings and truly accurate measurement.
6. The structure is compact, self-control, transmission closed.
7. It is accomplished by a pneumatic supply pipe, wash pipe, accurate and reliable.
8. Rotary hose mold with electric eye control center positioning device, the use of photoelectric sensors complete the automatic positioning.
9. Adjusting easy disassembly, particularly suitable for the production of large diameter hose multi-standard user, easy adjustment and quick.
10. Material contact parts made of 316 stainless steel, clean, sanitary, in full compliance with the requirements of GMP.
11. The machine speed by inverter control and adjustment.
12. Direct and convenient height adjustment.
13. Hose filling volume by adjusting hand wheel adjustment, and convenient.
14. Equipped with safety devices, door stop, no tube no filling, overload protection.
15. Transmission partially closed in the platform below, safe, reliable, non-pollution.
16. Filling and Folding parts mounted on the platform above semi-closed static-frame viewing hood, easy to observe, easy operation, easy maintenance.
17. Stainless steel touch switch operation board.
18. Photoelectric standard workstations, high-precision sensor, stepper motor control hose pattern in the correct position;
19. No filling leak, the air blow-off device blew cream tail. (This is our patent)
20. Ductless not filled.
21. Typing yards workstation will automatically code printed on the technical requirements of the position.
22. Fault alarm, overload shutdown.
23. Count and quantify downtime.

Accessories

Optional Accessories:

- Optional: Laminated Barrel Insulation Device
- Optional: Barrel Internal Mixing Device
- Optional: Multicolor Filling System
- Optional: Less than 3ML / Branch Dedicated Filling Device
- Optional: Automatic Feeding Pump
- Optional: Finished Tube Output Conveyor

Contact us

SHANGHAI BIAOZAN INDUSTRIAL CO.,LTD.

Add: No.65, Lanyu Road, Nanxiang Town, Jiading District, Shanghai

Email: sales@bzmachinery.net

Tel: +86 17602118540
